
GOLF | TENNIS | FITNESS | EQUESTRIAN | SPA | KIDS' CLUB | POOLS



The
GROVE

The Nashville Area's Premier
Private Club Community



WHERE EVERY MOMENT BECOMES A MEMORY

WELCOME TO THE GROVE

The Grove is the only luxury, gated, new home community offering a family-centric, private resort lifestyle in Middle Tennessee. Amenity highlights include a Greg Norman Signature Golf Course and a grand clubhouse called the Manor House. Here you will find all the comforts and services one desires in a private club setting; fresh and flavorful dining experiences, members' bar and lounge areas, a professionally staffed fitness center, a full-service day spa, a fully-stocked wine cellar, the General Store and so much more.

Members of all ages enjoy numerous opportunities to live an active, outdoor lifestyle—beautiful resort pool areas, parks, tennis courts, kids' club, hiking trails, fishing lakes, and the Jaeckle Centre, a world-class equestrian facility. With approximately fifty percent of the community devoted to open, lush green spaces, parks and pastures, embracing a healthy, active lifestyle is easy.

Ideally located in beautiful Williamson County, one of the fastest growing areas in Tennessee, The Grove offers a country lifestyle with the added luxury of nearby shopping and dining. With the lowest county tax in the Nashville Metropolitan Area, no state income tax, a school system ranked among the nation's best, and as the number one county in America for job growth, it is no wonder Williamson County was chosen by *Livability.com* as "the most desirable suburban location in Tennessee."

We invite you to discover The Grove for yourself. One visit is all it takes to fall in love.

“While it is convenient to shopping and entertainment with close access to the interstate, we saw it an as opportunity to meet people, enjoy golf and social activities.”

RANDY AND SUSAN FROM FRANKLIN, TN



FRANKLIN, TN

Franklin, just minutes away from The Grove, is a vibrant blend of historic preservation and southern charm that attracts people every year for its festivals, art galleries, fashion boutiques, historic houses, nationally acclaimed restaurants and award-winning antique shops. This historical city was voted "best small town" by *Livability.com*.

*“One of the Best Places to visit for
HISTORIC PRESERVATION”*



COOL SPRINGS & BERRY FARMS

The Grove is also located minutes from two of the fastest growing commercial and retail areas in Tennessee: Berry Farms and Cool Springs. Cool Springs encompasses the largest shopping district in Middle Tennessee and is home to major corporate headquarters such as Nissan North America, Healthways and Verizon Wireless.

A LIFESTYLE
LIKE NO OTHER

At The Grove, you will find an exciting club lifestyle perfectly suited for the entire family. We provide nothing but the best for our members; from the most comprehensive amenity and recreational offerings in the area, to a level of service second to none.

After just one visit, you will see why The Grove remains the unrivaled community of excellence in Middle Tennessee.



THE MANOR HOUSE

The Manor House, our private clubhouse, is the centerpiece of our beautiful community. Majestically overlooking our Greg Norman Signature Golf Course, the Manor House provides members with a true private club atmosphere where services are superbly offered in a personal and comfortable style.

Members can enjoy wonderful dining experiences, casual yet elegant bars and restaurants, comfortable lounge areas, a professionally staffed pro shop, a state-of-the-art fitness center, our very own luxurious Rosemary Spa and so much more.



EXCLUSIVE EVENTS



GOLF PRO SHOP



CASUAL & FINE DINING

18-HOLE GREG NORMAN SIGNATURE GOLF COURSE

Our 18-hole Signature Course is the pride of the community and premier golf course in Williamson County. Norman's signature design, the only one of its kind in Middle Tennessee, is both challenging and enjoyable. Whether you're an avid golfer or novice player looking to improve your game, The Grove prides itself on providing programs, social activities and clinics, for all skill levels and ages. It is the perfect home course – beautiful to play and see – a complement to this already inspiring land that feels as if it has been part of this area for generations.



PRACTICE FIELD



TOURNAMENTS & EVENTS

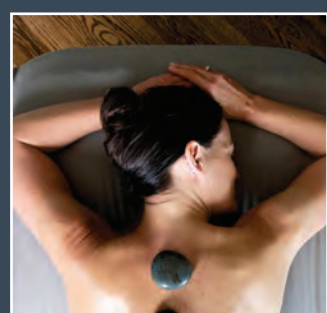


KIDS' GOLF CLINICS



THE ROSEMARY SPA

The Grove is home to Rosemary Spa, a full-service day spa offering services from invigorating massage therapy and rejuvenating essential facials to routine nail care, waxing, brow and lash treatments. Here members receive a 5-star luxury spa experience focused on their personal pampering and wellbeing.



FITNESS FACILITIES

At The Grove, you will find experienced personal trainers on hand to ensure your individual fitness goals are met. Our expansive facility features top of the line cardio, free weight and strength training equipment. Group classes, such as yoga and Pilates are also offered. There are endless fitness and wellness options at The Grove.



FUN FOR THE WHOLE FAMILY TO ENJOY



OUTDOOR ACTIVITIES AWAIT



SPORTS CENTRE

The Grove provides an expansive outdoor sports complex featuring a resort-style pool with beach entry and waterslide, a competition lap pool, tennis courts and a basketball court, plus full dining and bar service in our comfortable and relaxing outdoor pavilion.



PARKS & TRAILS

The Grove has miles of walking trails, sports fields, pocket parks and over 500 acres of open space to help maintain a healthy lifestyle for you and your family. Beautiful horses can be found grazing in the community pasture or hanging out by the fence waiting for a rub on the nose and a fresh apple.



ENJOY, INSPIRE, GROW



A CONVENIENT, ECLECTIC SHOPPING EXPERIENCE



DISCOVERY CLUB

At The Grove, we have a club dedicated to the enrichment of our youngest members. The Discovery Club offers a variety of programs year-round including holidays, Williamson County public school closure days and a varied calendar of fun and educational Day Camps during the summer. There is always something fun to do; from STEAM oriented camps focusing on the environment, science, arts and technology that challenge the imagination, to sports camps focusing on learning skills and being active. The bottom line is that The Discovery Club is the perfect place for kids to have fun, make new friends, and participate in planned activities – all in a safe, comfortable environment.



GENERAL STORE

The General Store offers members the convenience of shopping an eclectic collection of everyday essentials and luxury gift items without leaving the neighborhood. The General Store represents The Grove's passion for philanthropy and artistry by sourcing many products that are local, handmade and eco-friendly. Members can find a wide-ranging mix of necessities, luxuries and gift items that use simple, natural ingredients. From sumptuous skin care products or small-batch chocolate confections, to dish soap and a quick quart of milk, the General Store is stocked for your needs.





FOR COMPETITION, INSTRUCTION, AND JUST FOR FUN!

TENNIS

Whatever your skill level, our objective is to make your tennis experience at The Grove fun and rewarding by providing professional instruction, events, and playing opportunities to challenge you. Our courts are managed by our professional staff who are here year-round to offer clinics and camps, as well as mixers, fitness and fun. In the fully stocked Tennis Shop you will find apparel and shoes, adult and junior racquets and stringing service, everything you need to look and play your best.



A WORLD-CLASS EQUINE CENTER

AMENITIES

THE JAECKLE CENTER

The Jaeckle Center, The Grove's premier equine facility, provides state-of-the-art equine therapy equipment, a highly experienced team of accomplished professionals, impeccable facilities and 24-hour onsite management. Members of The Grove can take riding lessons, schedule trail rides, board horses and watch world-class competitions and equestrian events.



OUTDOOR RECREATION & CASUAL DINING



WELCOME TO OUR
DREAMWORTHY HOMES

THE GATHERING PLACE & BRIDGE BAR

The Gathering Place and Bridge Bar is a relaxed, family-friendly hub for fun and food. At The Gathering Place, there is no shortage of outdoor fun to enjoy when the weather is nice. Two lighted tennis courts (striped for four pickleball courts as well), a swimming pool with abundant lounge seating and covered gazebos, plus an expansive playground with cushioned rubber matting, all make up hours of ways to play the day away. The Gathering Place's full-service restaurant, The Bridge Bar, is a modern take on an old-fashioned favorite – the soda shop! Here, signature southern-style menu items are served on classic enamel dishes. Booth seating and lots of TV's make The Bridge Bar the perfect place to gather and watch a game with friends and neighbors.





LUXURIOUS COUNTRY ESTATE LIVING

The Grove features luxury, artisan-built estate homes that have been created from a rich, thoughtful palette of classic architectural styles, each with defined characteristics and signature elements and set into an impressive landscape dotted with streams, old farm lands and rolling wooded hills.

Countryside influences with modern convenience create a distinct architectural style that flows seamlessly with the land — everything you have ever imagined for your personal country manor.

HOMES FROM - 3,000 SQ FT

— *Priced from \$1.7M to \$4.5M+* —





CUSTOM ARCHITECTURE



LUXURY, ARTISAN-BUILT ESTATE HOMES



INSPIRATIONAL INTERIORS



SIGNATURE BUILDER TEAM



BEASLEY CONSTRUCTION & ASSOCIATES

Beasley is known for taking your specified budget, our access to quality materials, and the unique design that comes with your mind and our work; we will strive to bring your ideal home to life. Taking individual ideas for your design with our personal touch will make for a partnership that we believe will exceed your expectations.



DAVIS PROPERTIES

Distinguished by timeless architecture and superior craftsmanship, Davis Properties homes are custom designed with unsurpassed quality and meticulous detail. Working with highly skilled master craftsmen and using only the finest materials and finishes, each home exemplifies exacting standards of excellence.



FORD CLASSIC HOMES

At Ford Classic Homes, seasoned professionals actively assist homeowners through each stage of the building process. From grand southern-style homes, or one flavored with classic European architecture, Mike Ford and the professionals of Ford Classic Homes can build a luxury home that you and your family will be proud of for a lifetime.



HATCLIFF CONSTRUCTION

Hatcliff Construction is a family-owned and operated construction company that has been building fine custom homes in Middle Tennessee for almost 30 years. Hatcliff Construction has been named a member of the *Southern Living Custom Builder Program* for a seventh year—an honor bestowed upon the South's finest home builders.



LEGEND HOMES

Legend Homes offers timeless architectural designs, a keen eye for details and an appreciation for keeping on schedule. They continually stay abreast of market trends and monitor the lifestyle needs of discriminating home buyers in order to create homes with innovative designs and innovative technology.



LUNA CUSTOM HOMES

Luna Custom Homes has been making dreams come true for homeowners in Middle Tennessee since 1968. They know that every family is unique and how to build a home to fit your vision. Luna Custom Homes works closely with local architects in designing your home, they don't use stock floor plans. Every detail is important and they pride themselves in the attention to achieve those details.



SHANE MCFARLAND CONSTRUCTION

Shane McFarland Construction is a full-service builder in Middle Tennessee. Specializing in both residential and commercial construction, Shane has put together a highly skilled team with over 100 years' combined experience that demands excellence—from conception, to building, to follow-through.



STONEGATE HOMES

With more than 20 years' experience in every facet of the homebuilding industry, President Paul Huff's expertise utilizes the finest blend of timeless architecture, meticulous craftsmanship, and quality materials, along with a relentless pursuit of delivering projects on time, on budget and beyond expectations.



TRACE CONSTRUCTION

Trace Construction, led by Lindsay Butler, is a refreshing change for those looking for a personal experience in the custom home building process. Since 2003, Trace has built an impeccable reputation in the Williamson County area and takes great pride in the exceptional quality & attention to detail poured into every luxury home they build.



Learn more about The Grove by visiting GroveLiving.com

Homes Open Daily | (615) 368-3044 | 6200 Wildings Boulevard, College Grove, TN

The Grove and Grove Realty, LLC



All features, amenities or other representations contained in these materials are based upon current development plans, which are subject to change without notice. There is no guarantee that any of these features, amenities or other representations depicted or described in these materials will be built or performed at all or as depicted or described. ©The Grove, 2021.